



多级离心鼓风机 空气悬浮离心鼓风机

Multistage Centrifugal Blower
Air Suspension Centrifugal Blower



山东·章丘大成机械有限公司
Shandong.Zhangqiu Dacheng machinery CO.,LTD.

Add: Zhangqiu Mingshui, Jinan City, Shandong Province, China.

Tel/Fax: 0086-531-83800818

Mobile No.: 0086-13188890202

Website: <http://www.chinadicheng.com>

E-mail: zqdicheng@chinadicheng.com



山东·章丘大成机械有限公司
Shandong.Zhangqiu Dacheng machinery CO.,LTD.

COMPANY INTRODUCTION

公司简介



山东省章丘大成机械有限公司成立于八十年代中期,是国内重点鼓风机生产企业,公司位于山东省济南市章丘区城东工业园。现有固定资产捌仟万元,厂区占地面积70000m²。目前公司已成为罗茨鼓风机、多级离心鼓风机、空气悬浮离心鼓风机、磁悬浮离心鼓风机等产品研发、设计、生产、销售为一体的鼓风机专业企业。公司产品已通过ISO9001国际质量管理体系认证和CE认证。

C系列多级离心鼓风机引用美国和德国先进的透平机械技术,设计流量35m³/min-220m³/min,升压范围9.8KPa-98KPa。该风机具有效率高、噪音低、转速高(3550r/min)、振动小、节能优势明显等优势;具有无需地脚螺栓固定、采用强制风冷(无需水冷降温)、配置温度、振动传感装置,实时监控风机运行状况等结构特点。目前已申请结构和外观国家专利(专利号:201631262968.5 201621262948.5)两项。

DC系列空气悬浮离心鼓风机,是公司联合韩国TNE集团合作研发、设计的新一代超高效离心鼓风机,核心部件(PMSM)和超高速控制器原装进口,设计流量6m³/min-320m³/min,升压范围40KPa-150KPa。该风机具备专利空气悬浮轴承、航空铝合金三元流叶轮、专利闭环空气冷却系统、模块化控制与检测系统及防喘振保护等。深受国内用户青睐。

公司拥有数控加工中心、数控龙门加工中心、数控卧式镗铣床、数控刨床、数控龙门铣床、精密车床、电脑平衡检测仪等具有国内领先水平的大型精密生产、检测设备70余台。公司设市级技术中心,省级风机风管式综合性能检测中心,拥有一流的CAD设计和风机性能检测资质。

公司秉承以科技回报社会,通过不断的努力进取,开发最具科技含量的、性价比极高的产品,服务环保事业,造福社会。

Dacheng Zhangqiu Machinery Co.,Ltd is established in the middle period of the 1980's ,and is the focus of domestic manufacturers of blower, located in the Mingshui,Zhangqiu City,Shandong Province,China.The fixed assets of our company is more than 80 million RMB now, the factory covers the area of 70000 m².At present we have become a professional company in which set research and development, design, production and sales as one for roots blower, multi-stage centrifugal blower, air suspension centrifugal blower, magnetic suspension centrifugal blower and other products.All products have passed ISO9001 and CE certificates.

C series multi-stage centrifugal blower introduces United States and Germany advanced turbine mechanical technology, design flow 35m³/min-220m³/min, boost range 9.8KPa-98KPa.The advantages of this fan is high efficiency, low noise, high speed (3550r/min), small vibration and obvious energy saving .The structure feature of the fan includes non-fixed bolt, forced air cooling(not water cooling),temperature sensor, vibration sensor, real-time monitor and so on.At present we have applied two national patents for the structure and appearance (Patent No .: 201631262968.5 201621262948.5).

DC series of air suspension centrifugal blower, a new generation of ultra-efficient centrifugal blower,was developed, designed by our company and TNE company in Korea.Core components (PMSM) and ultra-high-speed controller are imported, the design flow is 6m³/min-320m³/min, boost range is 40KPa-150KPa.The fan has patented air suspension bearings, aviation aluminum ternary flow impeller, patent closed-loop air cooling system, modular control and detection system and anti-surge protection.Favored by domestic users.

Our company has the leading domestic level of large-scale precision production and testing equipment : CNC machining centers, CNC gantry machining centers, CNC horizontal boring and milling machines, CNC planer, CNC gantry milling machine, precision lathes, computer dynamic balance detector, etc.The quantity is more than 70.Our company sets up municipal technology center, the provincial fan duct-type comprehensive performance testing center, with first-class CAD design technology and fan performance testing qualification.

The company insists on repaying society through technology. Developed the most scientific and technological content, cost-effective products, through continuous efforts to forge ahead. Service environmental protection and benefit the community.





COMPANY QUALIFICATION

公司资质



PRODUCT STRUCTURE AND ADVANTAGES

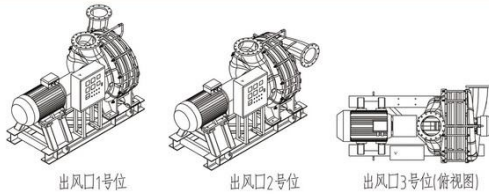
产品构造与优势

C系列多级离心鼓风机

C SERIES MULTISTAGE CENTRIFUGAL BLOWER

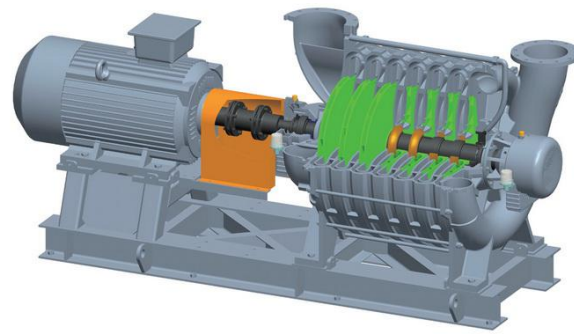
机壳构造 Housing Construction

机壳均采用优质铸件。通过调整叶轮数量实现不同压力需求。
The chassis is made of high quality cast iron. By adjusting the number of impellers to achieve different pressure requirements.
进出口方位设计有多种选项，可根据用户现场进行选择(见出口方位图)。There are a variety of options for import and export orientation design, according to the user's site to choose (see export orientation map).



转子装置 Rotor device

叶轮由重力铸造，钢模成型，保证风道型线的准确度。
Impeller is cast by gravity, steel mold, so as to ensure the accuracy of duct type.
单个叶轮加工后经静平衡校正，转子部件组装后进行整体动平衡校正，以确保整机的平稳运行。
After processing a single impeller is corrected by static balance, the rotor parts are subjected to integral dynamic balancing corrections after being assembled to ensure smooth operation of the machine.
各系列风机设计有多种性能叶轮，确保最佳的气动效率。
Each series of fans are designed with a variety of performance impellers to ensure optimum air efficiency.
拥有实用新型专利技术的平衡盘大大降低了轴承所承受的轴向力，提高了风机效率，延长轴承使用寿命。
The balance plate with a utility model patented technology greatly reduce the axial force on the bearings, improve the efficiency of the fan and extend the bearing life.



整机 Complete machine

整机构造拥有外观专利一项。
The whole structure has a patent for appearance.
主机与电机固定于公用钢制底座，安置于足够强度的水泥硬化地面上即可，无需地脚螺栓，安装方便快捷。
The host and the motor are fixed in the common steel base, can be placed in the cement hardened on the ground with sufficient strength, without the need for anchor bolts, easy to install.



轴承装置 Bearing device

轴承系统外挂与机壳两端，轴承运转温度大幅降低，且便于日常维护保养。
Bearing system is plugged at both ends of the housing, bearing operating temperature significantly reduced, and easy routine maintenance.

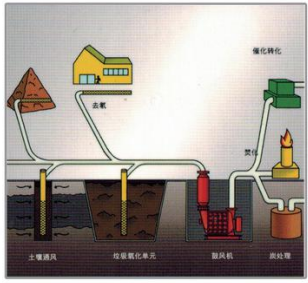
轴端密封 Shaft seal at both ends

采用迷宫密封、碳环密封及抽气密封，碳环密封及抽气密封结构也申请了实用新型专利。
Using a labyrinth seal, carbon ring seal and suction seal, carbon ring seal and suction seal structure also applied for a utility model patents.



PRODUCT APPLICATION

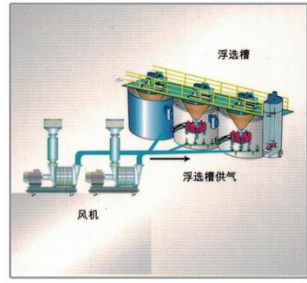
产品应用



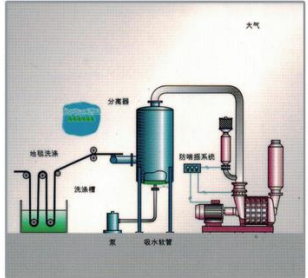
填埋气体处理
Landfill gas treatment



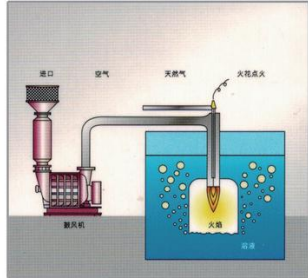
脱硫系统
Esulfurization equipment system



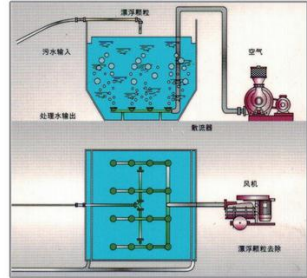
气浮系统
Air-floating system



真空液体提升
Vacuum liquid lift



水下燃烧系统
Underwater combustion system



污水处理（生化曝气）
Wastewater treatment (biochemical aeration)

- 市政/工业污水处理生化曝气
- 钢铁/化工/炭黑行业高压送风
- 脱硫系统
- 镀锌处理工艺(气刀工艺)
- 矿山浮选

- 工艺供气
- 垃圾填埋气体抽取
- 气力输送
- 工业除尘等等

- Process gas supply
- Landfill gas extraction
- Pneumatic transmission
- Industrial dust and so on

- Municipal / industrial wastewater treatment biochemical aeration
- Steel / chemical / carbon black industry high pressure air supply
- Desulfurization system
- Zinc plating technique
- Mine flotation

Model	Air capacity	Pressure
C35	35m ³ /min	78.4Kpa pressure -31.4Kpa vacuum
C40	40m ³ /min	78.4Kpa pressure -31.4Kpa vacuum
C45	45m ³ /min	78.4Kpa pressure -31.4Kpa vacuum
C50	50m ³ /min	78.4Kpa pressure -31.4Kpa vacuum
C55	55m ³ /min	78.4Kpa pressure -31.4Kpa vacuum
C60	60m ³ /min	78.4Kpa pressure -31.4Kpa vacuum
C65	65m ³ /min	88.2Kpa pressure -35.3Kpa vacuum
C70	70m ³ /min	88.2Kpa pressure -35.3Kpa vacuum
C80	80m ³ /min	88.2Kpa pressure -35.3Kpa vacuum
C90	90m ³ /min	88.2Kpa pressure -35.3Kpa vacuum
C100	100m ³ /min	98Kpa pressure -40Kpa vacuum
C110	110m ³ /min	98Kpa pressure -40Kpa vacuum
C120	120m ³ /min	98Kpa pressure -40Kpa vacuum
C130	130m ³ /min	98Kpa pressure -40Kpa vacuum
C140	140m ³ /min	98Kpa pressure -40Kpa vacuum
C150	150m ³ /min	98Kpa pressure -40Kpa vacuum
C160	160m ³ /min	98Kpa pressure -40Kpa vacuum
C180	180m ³ /min	88.2Kpa pressure -35.3Kpa vacuum
C200	200m ³ /min	73.5Kpa pressure -29.4Kpa vacuum
C220	220m ³ /min	68.6Kpa pressure -27.4Kpa vacuum

PRODUCING TEST

生产测试

专业化的生产车间精确的加工设备
完善的生产工艺流程和质量保证体系
完备的加工、装配、测试能力

Specialized production workshop
Perfect producing technical process and quality assurance system
Complete producing, assembling and testing ability



USER SITE

用户使用现场

多级离心鼓风机安装现场

INSTALLATION OF MULTISTAGE CENTRIFUGAL BLOWER



郑州客户现场
Zhengzhou customer site



出口韩国客户验收
Export customer acceptance



大庆肇源污水处理厂
Zhaoyuan Daqing sewage treatment plant



山东圣泉施工现场
Shandong Shengquan construction site

空气悬浮鼓风机安装现场

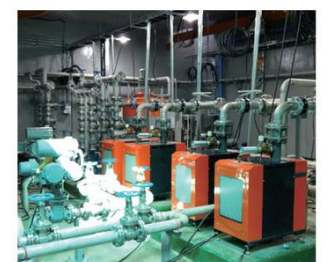
AIR BLOWER INSTALLATION SITE



河北沧州化工厂
Cangzhou Hebei chemical plant



四川乐山污水处理厂
Leshan Sichuan sewage treatment plant



出口南美客户现场
South American customer site