



多级离心鼓风机 空气悬浮离心鼓风机

Multistage Centrifugal Blower
Air Suspension Centrifugal Blower



山东·章丘大成机械有限公司
Shandong.Zhangqiu Dacheng machinery CO.,LTD.

Add: Zhangqiu Mingshui, Jinan City, Shandong Province, China.

Tel/Fax: 0086-531-83800818

Mobile No.: 0086-13188890202

Website: <http://www.chinadicheng.com>

E-mail: zqdicheng@chinadicheng.com



山东·章丘大成机械有限公司
Shandong.Zhangqiu Dacheng machinery CO.,LTD.

COMPANY INTRODUCTION

公司简介



山东省章丘大成机械有限公司成立于八十年代中期,是国内重点鼓风机生产企业,公司位于山东省济南市章丘区城东工业园。现有固定资产捌仟万元,厂区占地面积70000m²。目前公司已成为罗茨鼓风机、多级离心鼓风机、空气悬浮离心鼓风机、磁悬浮离心鼓风机等产品研发、设计、生产、销售为一体的鼓风机专业企业。公司产品已通过ISO9001国际质量管理体系认证和CE认证。

C系列多级离心鼓风机引用美国 and 德国先进的透平机械技术,设计流量35m³/min-220m³/min,升压范围9.8KPa-98KPa。该风机具有效率高、噪音低、转速高(3550r/min)、振动小、节能优势明显等优势;具有无需地脚螺栓固定、采用强制风冷(无需水冷降温),配置温度、振动传感装置,实时监控风机运行状况等结构特点。目前已申请结构和外观国家专利(专利号:201631262968.5 201621262948.5)两项。

DC系列空气悬浮离心鼓风机,是公司联合韩国TNE集团合作研发、设计的新一代超高效离心鼓风机,核心部件(PMSM)和超高速控制器原装进口,设计流量6m³/min-320m³/min,升压范围40KPa-150KPa。该风机具备专利空气悬浮轴承、航空铝合金三元流叶轮、专利闭环空气冷却系统、模块化控制与检测系统及防喘振保护等。深受国内用户青睐。

公司拥有数控加工中心、数控龙门加工中心、数控卧式镗铣床、数控刨床、数控龙门铣床、精密车床、电脑动平衡检测仪等具有国内领先水平的大型精密生产、检测设备70余台。公司设市级技术中心,省级风机风管式综合性能检测中心,拥有一流的CAD设计和风机性能检测资质。

公司秉承以科技回报社会。通过不断的努力进取,开发最具科技含量的、性价比极高的产品,服务环保事业,造福社会。

山东·章丘大成机械有限公司
DICHENG Shandong.Zhangqiu Dacheng machinery CO.,LTD.

Dacheng Zhangqiu Machinery Co.,Ltd is established in the middle period of the 1980's ,and is the focus of domestic manufacturers of blower, located in the Mingshui,Zhangqiu City,Shandong Province,China.The fixed assets of our company is more than 80 million RMB now, the factory covers the area of 70000 m². At present we have become a professional company in which set research and development, design, production and sales as one for roots blower, multi-stage centrifugal blower, air suspension centrifugal blower, magnetic suspension centrifugal blower and other products.All products have passed ISO9001 and CE certificates.

C series multi-stage centrifugal blower introduces United States and Germany advanced turbine mechanical technology, design flow 35m³/min-220m³/min, boost range 9.8KPa-98KPa.The advantages of this fan is high efficiency, low noise, high speed (3550r/min), small vibration and obvious energy saving. The structure feature of the fan includes non-fixed bolt, forced air cooling(not water cooling),temperature sensor, vibration sensor, real-time monitor and so on.At present we have applied two national patents for the structure and appearance (Patent No. : 201631262968.5 201621262948.5).

DC series of air suspension centrifugal blower, a new generation of ultra-efficient centrifugal blower,was developed, designed by our company and TNE company in Korea.Core components (PMSM) and ultra-high-speed controller are imported, the design flow is 6m³/min-320m³/min, boost range is 40KPa-150KPa.The fan has patented air suspension bearings, aviation aluminum ternary flow impeller, patent closed-loop air cooling system, modular control and detection system and anti-surge protection.Favored by domestic users.

Our company has the leading domestic level of large-scale precision production and testing equipment : CNC machining centers, CNC gantry machining centers, CNC horizontal boring and milling machines, CNC planer, CNC gantry milling machine, precision lathes, computer dynamic balance detector, etc.The quantity is more than 70.Our company sets up municipal technology center, the provincial fan duct-type comprehensive performance testing center, with first-class CAD design technology and fan performance testing qualification.

The company insists on repaying society through technology. Developed the most scientific and technological content, cost-effective products, through continuous efforts to forge ahead. Service environmental protection and benefit the community.



COMPANY QUALIFICATION

公司资质



PRODUCT STRUCTURE AND ADVANTAGES

产品构造与优势

DC系列空气悬浮鼓风机

DC SERIES AIR SUSPENSION BLOWER

● 高速永磁同步电机 (PMSM) High Speed Permanent Magnet Synchronous Motor (PMSM)

▼原装进口永磁同步电机，电机功率15KW至185KW，共8个系列。
Original imported permanent magnet synchronous motor, power is 15KW-185KW, total 8 series.
▼额定工况下电机磁通密度分布合理，效率可达97%，功率因数0.95。
Under the rated working conditions, the motor flux density distribution is reasonable, the efficiency is up to 97%, the power factor is 0.95.
▼可根据用户大风量需求，实现双电机并联一体控制。
It can achieve two motor parallel control, according to the user demand for large air volume

● 空气悬浮轴承装置 Air suspension bearing device

▼专利无油空气轴承，提升了负载能力和稳定性，可提供清洁压缩介质。
Patented oil-free air bearings, enhance the load capacity and stability, provide clean compressed media.
▼严把轴承整体预装检测环节，取得最佳流体动力学性能，可实现最高转速80000RPM。
We strictly check the bearing pre-installed detection link, to obtain the best fluid dynamic performance and achieve the maximum speed of 80000RPM.

● 专利冷却过滤系统 Patented cooling filter system

▼整机相对封闭空气冷却系统，内部二级除尘系统（可选项）。
Relatively closed air cooling system for machine, internal secondary dust removal system (optional).
▼过滤器安全报警值指示设置功能。
The function of instructions and settings for filter safety alarm value



● 整机提供户外型 Machine to provide outdoor type

▼特别定制室外防护外箱，防护级别IP54或同等级防尘防雨防护级别。
Special custom outdoor protection box, protection class IP54 or the same level of dust and rain protection level.
▼全不锈钢机箱防锈。
All stainless steel chassis can prevent rust.

● 高效率增压涡轮 High efficiency turbocharged turbines

▼采用航空铝合金叶轮，经特殊热处理工艺，重量轻，强度高。
Using aviation aluminum alloy impeller, with a special heat treatment process, light weight, high strength.
▼叶轮采用后倾角三元流设计，经超速破坏循环试验验证，高速运转平稳可靠。
The impeller adopts the recliner ternary flow design, passed the overspeed failure cycle test validation, high-speed operation is smooth and reliable.
▼设计配置单/双导叶扩压器，结构紧凑，协助实现风动效率的超广范围及效率最大化。
The design is equipped with a single / double guide vane diffuser, compact, to help achieve the wide range of wind efficiency and efficiency maximization.

● 工况运行模式控制 Working condition operation mode control

▼恒定速度——标准运行模式
Constant speed - standard operating mode
▼恒定压力模式——工程应用，污水处理厂
Constant pressure mode - engineering application, sewage treatment plant
▼恒定流量模式——气力输送领域
Constant flow mode - pneumatic conveying field
▼DO联动控制——污水处理厂
DO linkage control - sewage treatment plant
▼海拔运行控制——海拔2000米以上工程应用
High altitude operation control - engineering applications at altitudes above 2000 meters

● 变频控制器(VDF) Frequency Converter (VDF)

▼变频控制器控制，可支持用户多种工况模式运行，以调控不同流量和压力。
It can support a variety of operating mode of the user to run by the frequency controller control, thus regulating the different traffic and pressure.
▼VFD显示屏等控制部件，均采用模块化设计，更换和维护简单。
VFD display and other control components are using modular design, replacement and maintenance is very simple.
▼采用闭环矢量控制程序，可满足现场不同功率条件下电机的平稳启动与无损伤停止。
Using closed-loop vector control program, it can meet the smooth start of the motor and no damage to stop under different power conditions.

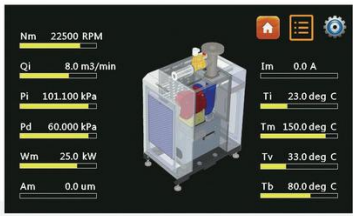
● 控制面板 Control Panel

▼7英寸以上触摸屏MCU或PLC控制。
7 inch or more touch screen, MCU or PLC control.
▼预留或实现远程流量、动作联动控制及检测端口。
Set up or implement control of remote traffic, action linkage and port detection.
▼设计多种安全定义选项。如：温度、喘振反馈，防回流破坏自锁，空气除尘安全设定等
Design a variety of security definition options. Such as: temperature, surge feedback, anti-return damage self-locking, air dust safety settings and so on.

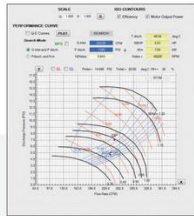
DC系列空气悬浮鼓风机性能参数表

Performance parameters of DC series air suspension blower

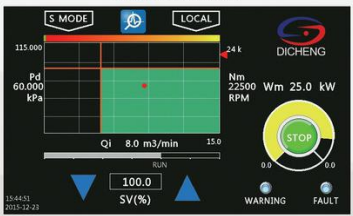
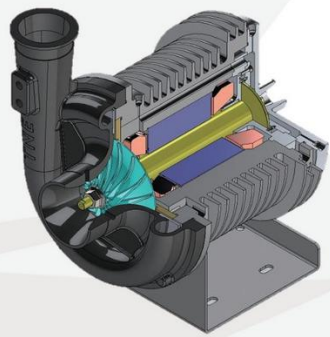
型号	DC20	DC30	DC50	DC75	DC100	DC150	DC200	DC250	DC300	DC400	DC500
芯核布局	单级						双级并联				
出口升压 (KPa.G)	进口流量 (m ³ /min) : 进口压力 101.32 KPa.A , 温度 20°C , 空气密度 1.2Kg/ m ³ , 流量公差±5%										
40	18	29	49	66	89	132	172	220	260	N/A	N/A
60	14	20	35	51	69	102	138	160	205	275	320
80	10	16	25	42	55	84	109	135	166	215	270
100	8	13	22	34	45	68	88	108	135	174	210
120	7	11	18	N/A	N/A	N/A	N/A	N/A	N/A	N/A	N/A
150	6	9	15	N/A	N/A	N/A	N/A	N/A	N/A	N/A	N/A
电机功率 HP(Kw)	20 (15)	30 (22)	50 (37)	75 (55)	100 (75)	150 (112)	200 (150)	250 (185)	300 (225)	400 (300)	500 (375)
出口法兰规格 DN PN1.0MPa(mm)	150	150	200	250	250	350	350	350	400	450	500
整机重量 (T)	130	270	270	420	420	820	980	1050	1250	1600	1950
外形尺寸 (mm)	宽	480	650	650	800	800	1340	1340	1340	1450	1600
	长	970	1130	1130	1450	1450	1450	1450	1450	1800	2200
	高	870	1130	1130	1780	1780	2340	2340	2340	2450	2450



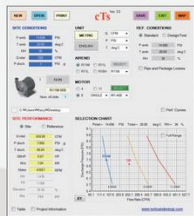
控制面板(界面1)



叶轮检测曲线



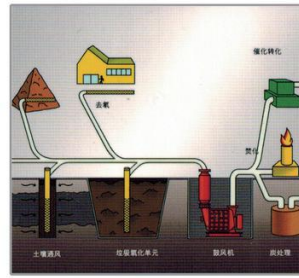
控制面板(界面2)



整机检测曲线

PRODUCT APPLICATION

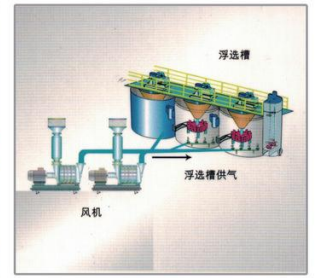
产品应用



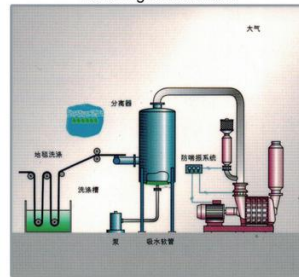
填埋气体处理
Landfill gas treatment



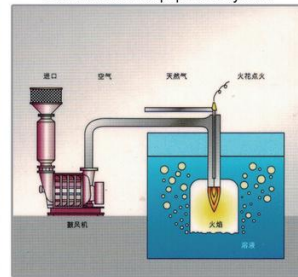
脱硫系统
Esulfurization equipment system



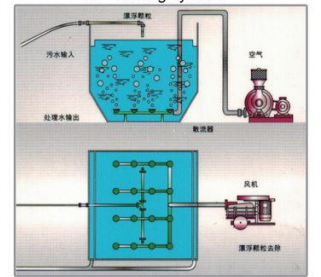
气浮系统
Air-floating system



真空液体提升
Vacuum liquid lift



水下燃烧系统
Underwater combustion system



污水处理(生化曝气)
Wastewater treatment (biochemical aeration)

- 市政/工业污水处理生化曝气
- 钢铁/化工/炭黑行业高压送风
- 脱硫系统
- 镀锌处理工艺(气刀工艺)
- 矿山浮选

- 工艺供气
- 垃圾填埋气体抽取
- 气力输送
- 工业除尘等等

- Process gas supply
- Landfill gas extraction
- Pneumatic transmission
- Industrial dust and so on

PRODUCING TEST

生产测试

专业化的生产车间精确的加工设备
完善的生产工艺流程和质量保证体系
完备的加工、装配、测试能力

Specialized production workshop
Perfect producing technical process and quality assurance system
Complete producing, assembling and testing ability



USER SITE

用户使用现场

多级离心鼓风机安装现场

INSTALLATION OF MULTISTAGE CENTRIFUGAL BLOWER



郑州客户现场
Zhengzhou customer site



出口韩国客户验收
Export customer acceptance



大庆肇源污水处理厂
Zhaoyuan Daqing sewage treatment plant



山东圣泉施工现场
Shandong Shengquan construction site

空气悬浮鼓风机安装现场

AIR BLOWER INSTALLATION SITE



河北沧州化工厂
Cangzhou Hebei chemical plant



四川乐山污水处理厂
Leshan Sichuan sewage treatment plant



出口南美客户现场
South American customer site